



Motorola AXSvision

Advanced Element Management System



Highlights include:

Real time inventory and configuration synchronization of all network hardware and software

ONT auto-discovery and auto-ranging

Universal XML and SNMP interfaces

Extensive logging, historical analysis, and performance statistics

Flow through and bulk service provisioning

Network outage, subscriber and service correlation

Universal Pre-provisioning

Role-based access control, highly secure extensive activity logging, and tracking.

Embedded software management of network elements

Flexible platform supports deployments of varying size and scale

Motorola's AXSvision is a graphically rich Element Management System (EMS) designed specifically to enable simplified deployment of the most complex fiber-to-the-home (FTTH) networks. AXSvision provides a highly graphical user environment to enable rapid creation and delivery of high value ultra-broadband services provided by the Motorola GPON solution. AXSvision delivers full Fault, Configuration, Administration, Performance, and Security (FCAPS) management functionality and ensures the Motorola GPON solution integrates smoothly with higher-level Operations Support Systems (OSS).

Robust and reliable, AXSvision software is designed for scalability and deployment flexibility. The system supports a broad range of deployment options, offering operators the ability to support rapid scaling of their network while reducing the complexity of system operations and management. AXSvision is a proven and trusted element management solution deployed in the most advanced FTTH networks.

With Motorola's AXSvision, service providers can:

- Simplify provisioning and management of their GPON networks
- Quickly isolate faults and identify network outages
- Troubleshoot and correct service problems
- Support hundreds of simultaneous GUI client and OSS sessions
- Perform on-demand and scheduled network backups and upgrades
- Easily integrate AXSvision into existing operational environments with standards-based XML and SNMP interfaces

DATA SHEET

Motorola AXSvision Element Management System

FEATURES

Motorola's AXSvision provides for 100% remote operations with full Fault, Configuration, Administration, Performance, and Security (FCAPS) management for the Motorola line of optical line terminals (OLT) and suite of single family, multi-dwelling unit and business class optical network terminals (ONT).

FAULT MANAGEMENT, TEST, AND DIAGNOSTICS

Fast and accurate fault detection and isolation
Real time alarm and event notifications and historical logs
Alarm acknowledgement history with user identification and comments
Configurable alarm severity levels
Service-affecting outage analysis
Remote test management
Configurable threshold alarms

CONFIGURATION MANAGEMENT

ONT auto-discovery
Real time Inventory reporting (hardware and software)
Equipment resource provisioning
End-point service pre-provisioning
Profiles for simplified configuration
QoS and Bandwidth management
Configuration via highly interactive GUI or via full-feature, XML-based NBI
Rapid device discovery and database synchronization
Role based access control
Basic and advanced find for physical and logical entities

ADMINISTRATION AND SOFTWARE MANAGEMENT

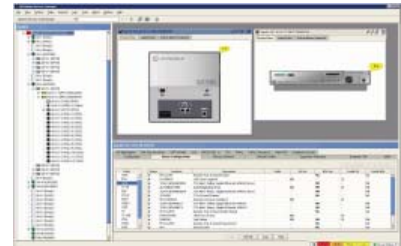
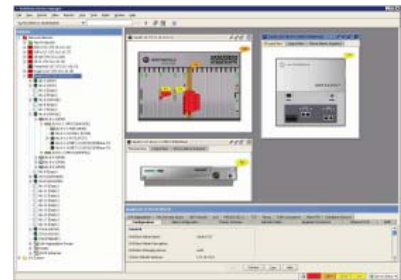
Scheduled and on-demand back up/restore of network configuration databases
Managed upgrades (download, activate, accept) of system release software
ONT software updates automatically on installation
Logging and reporting via GUI, database and exported files
Multi-level device folders for organizing views of devices

PERFORMANCE MANAGEMENT

Statistical data retrieval and graphing
Real-time absolute and incremental traffic counters in tabular and graph form
Bulk stats for pm history and trend analysis

OPERATING ENVIRONMENT

Sun Solaris 10, Sun secure global desktop (optional)
Oracle 11g
Sun one directory server
100% pure client/server Java application



Motorola, Inc. 101 Tournament Drive, Horsham, Pennsylvania 19044 U.S.A. www.motorola.com

MOTOROLA and the Stylized M Logo are registered in the US Patent & Trademark Office. All other product or service names are the property of their respective owners.
© Motorola, Inc. 2009. All rights reserved.

569540-001-a 0309 5991 - 0K